

BRITAIN'S BESTSELLING
HOMES MAGAZINE

MARCH 2011 £3.30

Ideal Home

THE
MAKEOVER
ISSUE

675 FRESH IDEAS AND brilliant buys

*Affordable and
creative ways
to make over
your home*

**BUYER'S
GUIDES**
DISHWASHERS
HOME-OFFICE DESKS
TV SOUNDBARS
WAKE-UP ALARMS
BATHROOM
STORAGE



**AMAZING ROOM
TRANSFORMATIONS**
New Looks
For Kitchens



**WE LOVE THEM
- SO WILL YOU!**

10

Fabulous Feature
Wallpapers

CLEAR THE CLUTTER
THE ULTIMATE GUIDE
TO FITTED FURNITURE



EASY RECIPES
Quick Weekday
Suppers



EXPERT ADVICE
Choose The Best
Kitchen Island

Plan a Project

**5 AMAZING
REAL HOMES**

**3 GORGEOUS LOOKS
FOR BATHROOMS**

CALM, CLEAR & BEAUTIFUL

Lighten up

REFRESH YOUR HOME WITH THE
NEW SPRING COLOURS

YOUR LUCKY
NUMBER IS
75357
£3.30
March
2011
Recall: 1/3/11

Kitchen

Get baking

Make like a domestic goddess with this 1950s-style scale
Mint kitchen scale, Dotcomgiftshop



£19.95



£59.95

Time out
Tap into the industrial trend with this factory-style stainless-steel timepiece
S/S wall clock, Wheesh



£50.54 per roll

Mellow yellow

This sunny wallpaper looks especially striking with glossy white units or furniture
Cow Parsley 66/7051 wallpaper, Cole & Son



£119

Simple styling
Smarten up your sink with a sleek single-lever tap
Vancouver side-lever tap, B&Q



£18

Style injection

Give a plain kitchen a lift with colourful designer accessories
Utensil pot and storage jar, Orla Kiely range, Heal's



£19



Colour splash
This vibrant colander comes in pink or blue, too
Colourworks colander, Cargo

£9.99



Get Denise's look

Bold patterned wallpapers and bright accessories give Denise's home a fun, contemporary feel

For where to buy items shown, turn to page 64

Main bedroom

Square number

The funky shape makes it look high-end, but it comes with a teeny price tag
Table lamp, Dunelm Mill

£19.99



£25

Gold standard

Add a little sophistication with golden accessories
Belmonte cushion in Oyster, Christy range, House of Fraser

Delicate lighting

This pretty shade is made from shell discs that will gleam in the light
Pendant, Tu range, Sainsbury's

£20



£25

Storage on a shoestring

You can't beat this great-value chest, which has two drawers to stash your stuff in
Malm two-drawer chest, IKEA

Luxe factor

These sequin-detail curtains will give your bedroom an opulent feel
Sequin Beaded Eyelet curtains in Champagne, Next

From £50



£25 per roll

Modern floral

An eye-catching design in a subtle colour combination is perfect for a bedroom feature wall
lola 75641 wallpaper, Harlequin



Be bold in every room

Use feature walls and colourful accessories to create a contemporary and imaginative home, as Denise O'Connor has

For where to buy items shown, turn to page 64

The big
CHANGE

HANGING STRIKING
PATTERNED WALLPAPERS
THROUGHOUT THE HOUSE
TO BRING THE DATED
INTERIOR BACK
TO LIFE

Take the 60-second tour

BOUGHT FOR | SPENT | NOW WORTH

£550,000 | £14,100 | £700,000



THE PROPERTY

A four-bedroom semi-detached house in Dublin, built in the late 1950s. The current owners bought it in December 2008.

WHAT IT COST

Painting & wallpaper.....	£1,900
Carpets.....	£2,130
Timber flooring.....	£2,720
Kitchen.....	£5,000
Blinds.....	£1,000
Labour.....	£850
Tiling.....	£500
TOTAL.....	£14,100

WHO LIVES HERE

Denise O'Connor, her husband Roger Brownlie and their sons Conan, five, and Bill, nearly

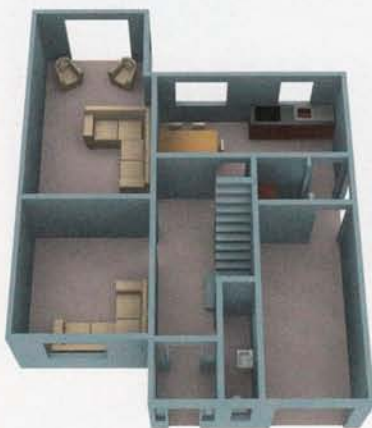
two. Denise is an architect and a partner in a design company, and Roger works as an editor.

THE LOOK

Neutral décor is brought to life with hits of punchy colour and attention-grabbing patterned wallpaper.

LESSONS LEARNED

'Budget for the unexpected, and be flexible. We didn't plan to spend much on wallpaper stripping, but when the paper came off and pulled plaster with it, it turned out to be very costly. We decided just to paint over the paper in some places, which has worked quite well, and do the work later room by room when we have more money.'



GROUND FLOOR The formal living room is at the front of the house with the family room and kitchen at the back. A utility room leads off the garage



FIRST FLOOR The couple's room and Bill's room are at the front of the house, with Conan's room, the guest room and the bathroom at the back



Family room

'The aim was to make it bright and child friendly,' says Denise. A red rug makes the seating area the focus of attention and is the perfect spot for play Indivi sofa, from £1,495, BoConcept. For similar rug, try the Ombre, from £65, Next

Five years ago, Denise O'Connor and her husband Roger Brownlie decided to leave the UK to start a new life in Ireland. They set their sights on Dublin, where Denise grew up, and arrived there in the autumn of 2005, when their son Conan was just 10 weeks old.

The couple rented a property to start with, but after two years, they were ready to put down roots and look for a permanent home. Their search proved challenging as house prices in the city were at an all-time high, but they soon put in an offer on a 1950s semi-detached house in south Dublin, close to where Denise grew up and where her family lives today.

'The house had a stunning 100ft-long south-facing garden and I loved its character, especially the proportions of the doors, which I think are very

attractive,' says Denise. 'Although it was dated, I thought it had lots of potential and envisioned opening up and extending the ground floor.'

Sadly, their offer was rejected, and the couple had to continue their search. However, six months later, the property market had changed - and their luck changed with it. The vendors of the 1950s house got in touch with Denise and Roger to see if they were still interested in the property, and the couple managed to secure it at a price below their original offer. 'We got it at quite a good price, which was just as well as we really couldn't have afforded any more,' says Denise.

The only downside was that the sale closed at the very end of November, and Denise, who was pregnant with the couple's younger son Bill at the time, wanted very much to be in their new house for Christmas. 'Actually, I think the "nesting thing" helped,' she >>



3 of the best LARGE-SCALE MIRRORS



£200

Ray of light

This sun-style mirror is a real stunner
Eiton mirror (diameter 120cm),
House of Fraser



£450

Right angles

The angled glass bounces light around
Rectangular Multi-faceted mirror
(H152cm x W84cm), Graham and Green



£1,097

Baroque star

Dark, dramatic and oh-so ornate
Marseilles mirror (H250cm x W150cm),
Juliette's Interiors



Dining area
Children's drawings and
bright tableware provide
a hit of colour in the
all-white dining area
For similar table, try the
Claudia, £546, Furniture123

*'I wanted to create a happy
and practical family home,
but also a bright, vivid
environment full of lovely things'*

**MAKE
IT OVER!**

Paint wooden
furniture to
match your
scheme



GET THE
LOOK
Page 65



Kitchen

Denise jazzed up her simple IKEA kitchen with a vibrant wallpaper. 'We spent ages working out the colourway,' she says. 'I liked pink, but it was too girly, so we went for yellow' Cow Parsley wallpaper, £48 per roll, Cole & Son. Faktum units with Applåd White doors, from £30.65 for a 300mm base unit, IKEA

Living room

The couple chose calming shades of blue and grey for the adults-only living room – although Denise couldn't resist a striking wallpaper in the alcoves Sequoia Wellington wallpaper, £42.50 per roll, Kuboaa. Mezzo sofa, from

Entrance hall

Denise chose a bold paper to draw the eye to the back of the hall and make an immediate impact. Arizona wallpaper, £47 per roll, Osborne & Little



CREATE A FEATURE WALL

It's a great way to add impact, but which wall should you choose?

1 Show off the chimney breast This is a small but visible area, so try a bold colour or pattern. A shade that's deeper than the other walls works well, but do bear in mind the style of your fire surround.

2 Highlight alcoves For a balanced look, paint or paper alcoves. A pale shade or small-scale pattern will make the area recede so the room looks larger, while a darker colour or big pattern will create a cosy feel.

3 Turn your sofa into a feature If your living room lacks a focal point, painting or papering behind the sofa can help. Cover the whole wall or use a wide vertical band of colour to make the ceiling appear higher.

4 Paper behind your bed If you have a divan or a bed with a simple headboard, add impact with a feature wall. As the wall is likely to be straight, you can use any paper – go wild with florals, hotel stripes or damasks.

'The house is practical and great for children, but comfortable for adults, too'



GET THE
LOOK
Page 65



Dressing area

The chest of drawers fits neatly beside the wardrobe. Denise hung a mirror above to create a mini dressing table. Pax wardrobe, £425, IKEA

says. 'I focused all my energies on getting through the whole process in time for the baby. We had less than a month from the time we got the keys to Christmas Day, so it was quite a challenge.'

Denise is a partner in architecture and interior-design consultancy Optimise Design, so it was a task she was well prepared for. Even before the deeds were signed, she had booked the builders and tradespeople, and organised the schedule of work. 'We had paid as much as we could possibly afford for a house we really liked in the location that was perfect for us, so we didn't have the money to do any major structural work,' she says. 'However, every single room in the house needed something done to it in order to make it work as a comfortable family home.'

In the kitchen, the existing units had obviously been made by a previous owner, so a large portion of the money the couple had set aside for the renovation was swallowed up on a new kitchen. 'We plan to extend the rear of the house at some stage, so we just wanted a budget kitchen that would do for the time

PICK THE RIGHT WALLPAPER

Follow our guide to choose the best type for your room

- ✓ **LINING PAPER** A base paper applied to bare walls in preparation for paint or decorative wallpaper. It covers minor imperfections and is hung horizontally, in the opposite direction to the top paper.
- ✓ **VINYL-COATED** Treated to withstand grease, grime and humidity, this is ideal for kitchens and bathrooms. It's washable and easy to strip when you're ready for a change.
- ✓ **COATED FABRIC** A layer of fabric on a layer of vinyl, it cannot be applied where there is a high level of humidity.
- ✓ **PULP** These are the everyday wallpapers, with a pattern printed on a basic paper. Easy to hang, but don't overstretch as it makes matching patterns on adjacent strips difficult.
- ✓ **VINYL** Tougher than vinyl-coated, these are hung by pasting the wall rather than the paper. They're washable, and while they're usually hard to strip, the latest ones claim to be easy to remove, too.
- ✓ **ANAGLYPTA** A trade name, but often used to refer to plain embossed papers. Hides defects in walls and is usually finished with a coat of paint.
- ✓ **FLOCK** One of the oldest types, with a raised velvet-like pattern.



Main bedroom
 'We just wanted this to be a grown-up, relaxing room, so I used a neutral colour scheme that is very easy on the eye,' says Denise
 Wisteria wallpaper, £47 per roll, Kubboa. Cushions, from £25 each, Absolute Interiors

being,' says Denise. She and Roger hired a van and went to the nearest IKEA to buy simple, inexpensive white units. They bought new wardrobes for the bedrooms during the same trip, and drove home with the van full of flatpaks. When Denise's mother changed her kitchen, she donated a wooden table and chairs to the couple, and Denise painted them white to match the new units.

The couple already had much of their furniture from their previous home, and they supplemented this with budget buys and a few second-hand pieces, like the dining furniture. In every room, the furniture is set against a background of neutral paint shades and wooden flooring, but Denise has added patterned wallpapers, colourful rugs and bright artwork to bring the house to life. 'I wanted to create a happy and practical family home, but also a bright, vivid environment full of lovely things,' she says.

When the couple moved in, every room in the house was covered in dated wallpaper, and Denise couldn't wait to get rid of it. However, when she and Roger



MAKE IT OVER!
 Turn a duvet cover or fabric offcut into a chic blind

Guest bedroom
 Denise loved the IKEA duvet cover so much she had a blind made from another one to match
 Duvet cover, £19.99, IKEA. Stone stool, £121, Kartell range, Aram Store. Tam Tam stools (used as tables), £15 each, Habitat



Conan's room

Conan has a blue-and-red theme in his room, with a striped blind and patchwork-style bed linen. The toy moose head is a quirky touch. For similar bed linen, try the On The Sea set, £50, Laura Ashley. Blind fabric, £85 per m, Helen Turkington Interiors

Bill's room

'The colour scheme started from the lovely egg cosies that my Granny made, which I had framed and hung on the wall,' says Denise. 'I've always loved them, and they're perfect for a child's room'

Blind fabric, £42.50 per m; rug, £139; both Laura Ashley. Light shade, £11.22, IKEA



started to remove the layers of original wallpaper and built-in cupboards from the 1960s it caused them major problems, as chunks of plaster crumbled off at the same time. 'It was unexpected, so it caused a glitch to the budget and schedule,' says Denise. 'We had neither the time nor the money to completely strip and repair the plaster in the whole house, so we repaired what we had to, and left the wallpaper on the walls in the rest of the house, just painting over it. In the future, we can strip it all off and make good room by room, but to be honest, with two small boys, we're happy to leave it for the moment.'

The majority of the work took place in the first three weeks of December, and in Christmas week the committed builders were still going full steam ahead. 'They were marvellous, and unbelievably, the house was habitable and fit to move into by 23 December,' says Denise. 'With everything finished, our only real problem was that we couldn't find a good Christmas tree - all the nice ones were gone and the only ones left were the wonky rejects!'

Now the family are completely settled in their home. 'It's practical and great for the children, but comfortable for adults, too,' says Denise. 'It also has limitless potential for the future, with the huge south-facing rear garden. I'm really looking forward to creating an open-plan ground floor that flows out into that sunny space right from the front door, through the kitchen and incorporating the living spaces, too. But that's another day's work and in the meantime, our little family is quite content here.'

'We didn't have the money to do any major structural work. However, every single room needed something done in order to make it work as a comfortable family home'

WHERE TO BUY ITEMS SHOWN

ABSOLUTE INTERIORS

00 353 1282 4932; absoluteinteriors.ie

ARAM STORE

020 7557 7557; aram.co.uk

B&Q

0845 609 6688; diy.com

BOCONCEPT

020 7388 2447; boconcept.co.uk

CARGO

01844 261800; cargohomeshop.com

COLE & SON

020 7376 4628; cole-and-son.co.uk

DOTCOMGIFTSHOP

020 8746 2473; dotcomgiftshop.com

DUNELM MILL

0845 165 6565; dunelm-mill.co.uk

FURNITURE123

0845 601 4068; furniture123.co.uk

GRAHAM AND GREEN

0845 130 6622; grahamandgreen.co.uk

HABITAT

0844 499 1111; habitat.co.uk

HARLEQUIN

0870 830 0032; harlequin.uk.com

HEAL'S

0870 024 0780; heals.co.uk

HELEN TURKINGTON INTERIORS

00 353 1412 5138; helenturkington.ie

HOUSE OF FRASER

0845 602 1073; houseoffraser.co.uk

IKEA 0845 355 1141; ikea.com

JULIETTES INTERIORS

01789 721911; juliettesinteriors.co.uk

KUBOAA

0117 373 2125; kuboaa.co.uk

LAURA ASHLEY

0871 230 2301; lauraashley.com

NEXT

0844 844 8000; next.co.uk

OPTIMISE DESIGN

00 353 1260 8788; optimise-design.com

OSBORNE & LITTLE

020 8812 3000; osborneandlittle.com

SAINSBURY'S

0800 636262; sainsburys.co.uk

WHEESH

01725 514779; wheesh.com